

# INJURIES IN GREY BRUCE: AGRICULTURAL MACHINERY



On average, contact with, or transport accidents involving agricultural machinery cause 55 emergency department visits, 8 hospitalizations, and 1 death every year in Grey Bruce.

## GREY BRUCE RATES HIGHER THAN RURAL ONTARIO RATES

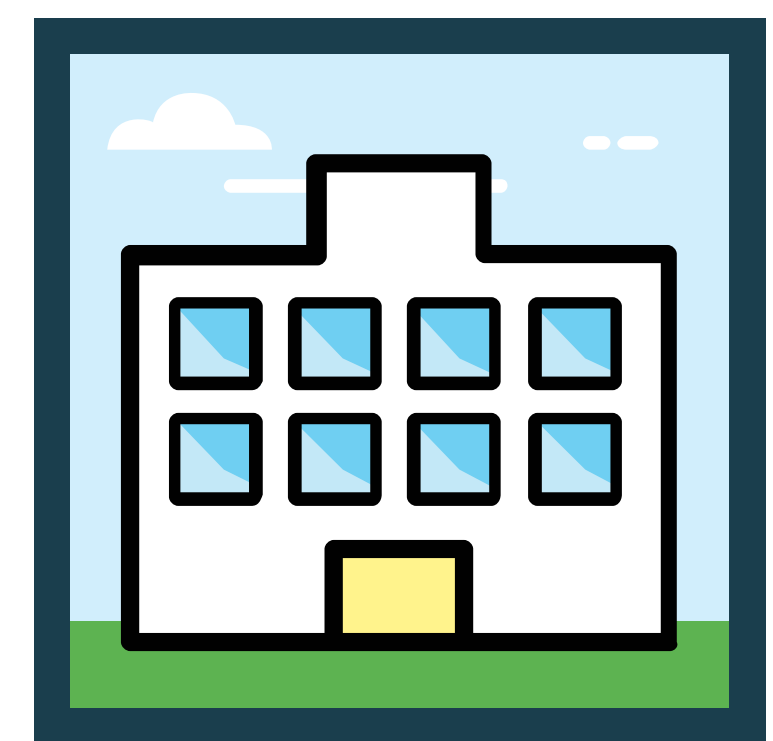
The local rates of emergency department (ED) visits and hospitalizations for machine-related agricultural injuries are twice as high as the rates in other rural areas of Ontario.

### ED VISITS



Rate **2x** as  
high in  
Grey Bruce

### HOSPITALIZATIONS



Rate **2x** as  
high in  
Grey Bruce



## ADULT MALES AT GREATEST RISK

Male Grey Bruce residents aged 15 and older are at greatest risk of being injured by agricultural machinery.

## LOCAL INJURY RATES STABLE OVER TIME

The local rates of ED visits and hospitalizations for machine-related agricultural injuries have remained stable since 2003-04.

